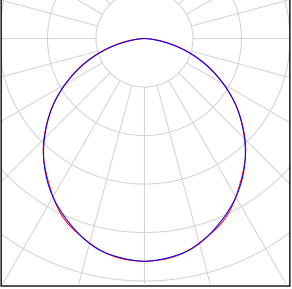
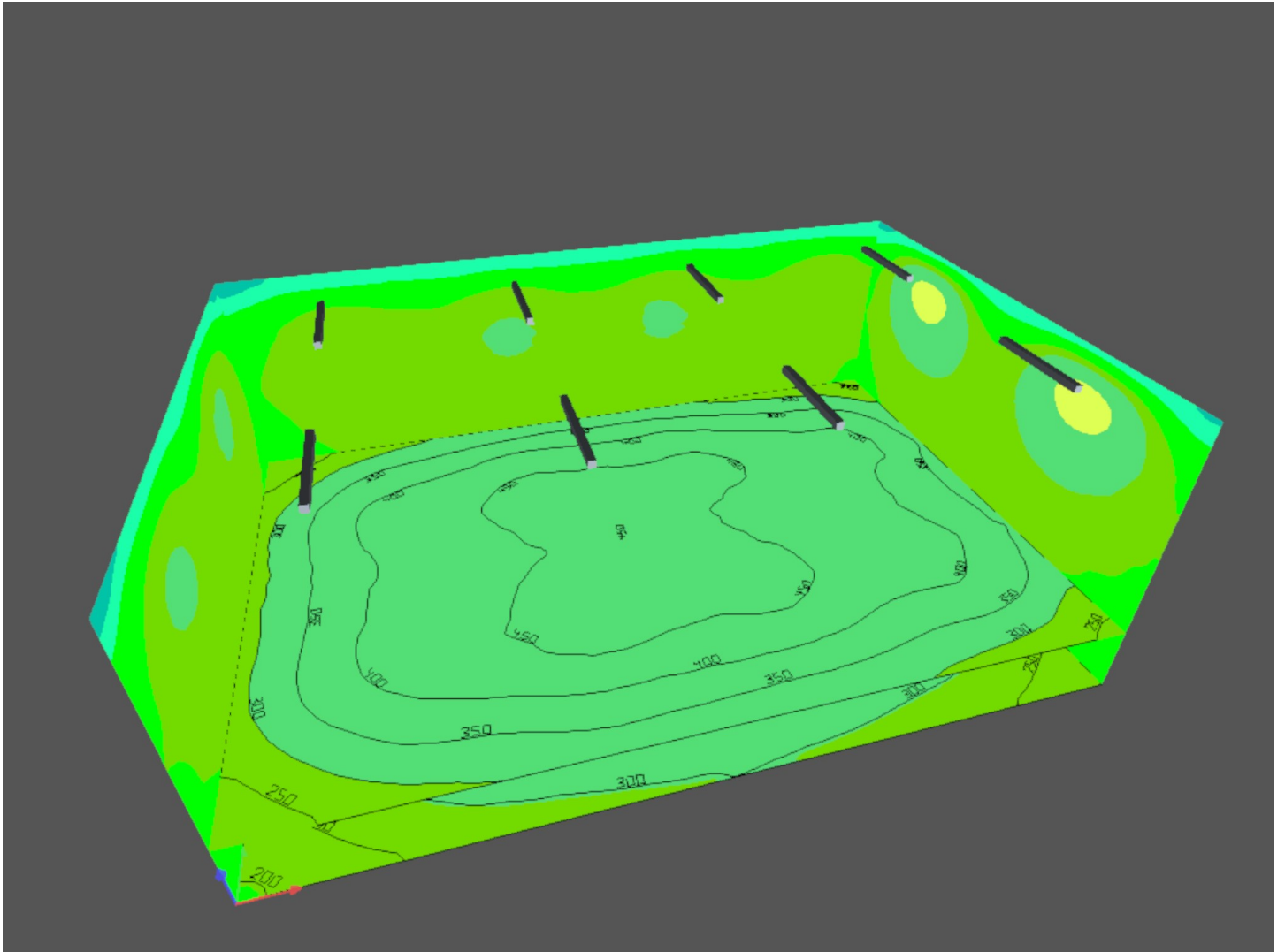


Project scoala 11

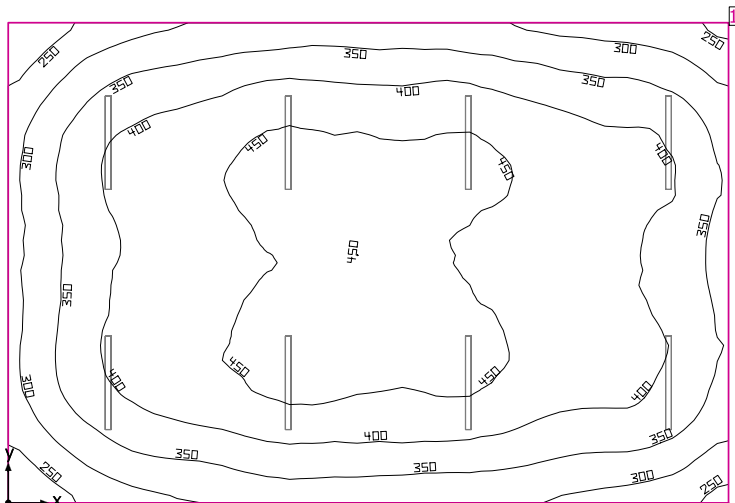
Quantity	Luminaire (Luminous emittance)		
8	Greentek - 101069 Artus 120S/4000/38W/80 Artus Luminous emittance 1 Fitting: 1xLED Light output ratio: 100% Lamp luminous flux: 4310 lm Luminaire luminous flux: 4310 lm Power: 38.0 W Luminous efficacy: 113.4 lm/W Colorimetric data 1x: CCT 4000 K, CRI 80	See our luminaire catalog for an image of the luminaire.	

Total lamp luminous flux: 34480 lm, Total luminaire luminous flux: 34480 lm, Total Load: 304.0 W, Luminous efficacy: 113.4 lm/W

Project scoala 11



Room 1



Clearance height: 3.400 m, Reflection factors: Ceiling 70.0%, Walls 50.0%, Floor 20.0%, Light loss factor: 0.80

Workplane

Surface	Result	Average (Target)	Min	Max	Min/average	Min/max
1 Workplane (Room 1)	Perpendicular illuminance (adaptive) [lx] Height: 0.800 m, Wall zone: 0.000 m	391 (≥ 500)	203	470	0.52	0.43

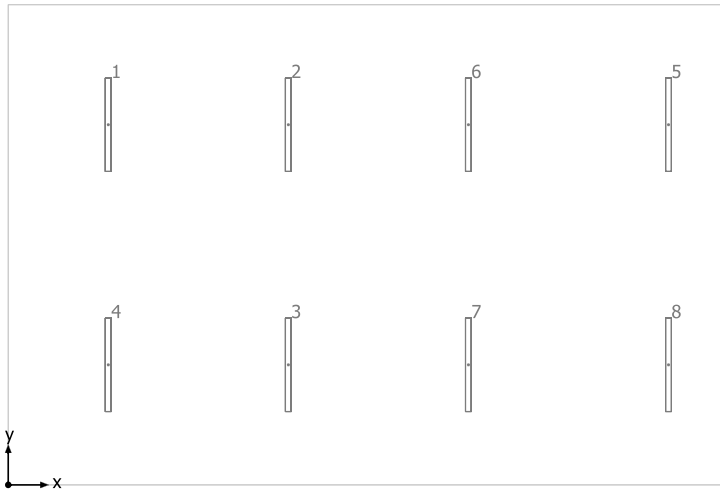
# Luminaire	Φ(Luminaire) [lm]	Power [W]	Luminous efficacy [lm/W]
8 Greentek - 101069 Artus 120S/4000/38W/80 Artus	4310	38.0	113.4
Total via all luminaires	34480	304.0	113.4

Lighting power density: $5.63 \text{ W/m}^2 = 1.44 \text{ W/m}^2/100 \text{ lx}$ (Floor area of room 54.00 m^2)

Consumption: 840 kWh/a of maximum 1900 kWh/a

The energy consumption quantities do not take into account light scenes and their dimming levels.

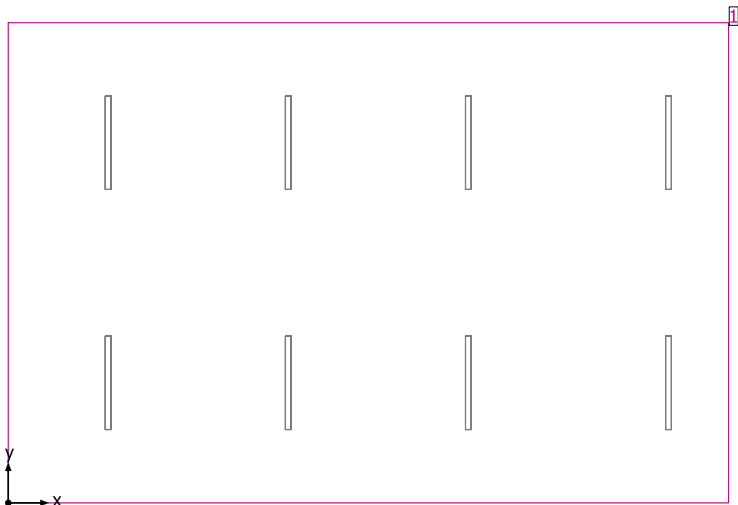
Room 1



Greentek 101069 Artus 120S/4000/38W/80 Artus

No.	X [m]	Y [m]	Mounting height [m]	Light loss factor
1	1.250	4.500	3.400	0.80
2	3.500	4.500	3.400	0.80
3	3.500	1.500	3.400	0.80
4	1.250	1.500	3.400	0.80
5	8.250	4.500	3.400	0.80
6	5.750	4.500	3.400	0.80
7	5.750	1.500	3.400	0.80
8	8.250	1.500	3.400	0.80

Room 1

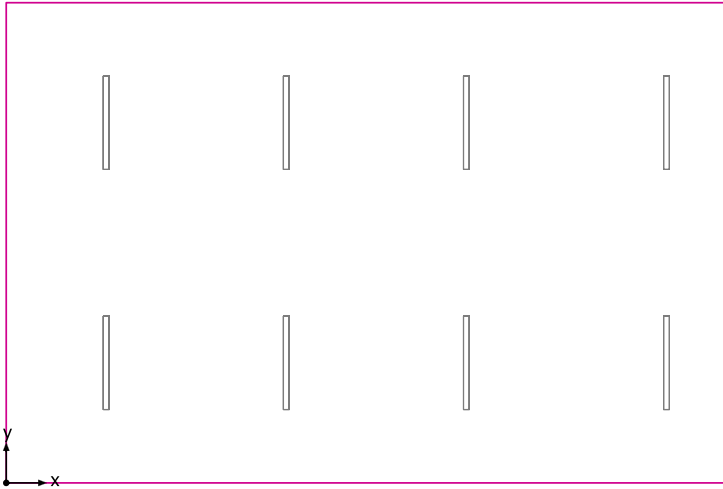


Clearance height: 3.400 m, Reflection factors: Ceiling 70.0%, Walls 50.0%, Floor 20.0%, Light loss factor: 0.80

Surface result objects

Surface	Result	Average (Target)	Min	Max	Min/average	Min/max
1 Surface result object 1 (Floor/ceiling)	Perpendicular illuminance (adaptive) [lx]	341	191	416	0.56	0.46
	Luminance [cd/m ²]	21.7	12.2	26.5	0.56	0.46

Workplane (Room 1) / Perpendicular illuminance (adaptive)



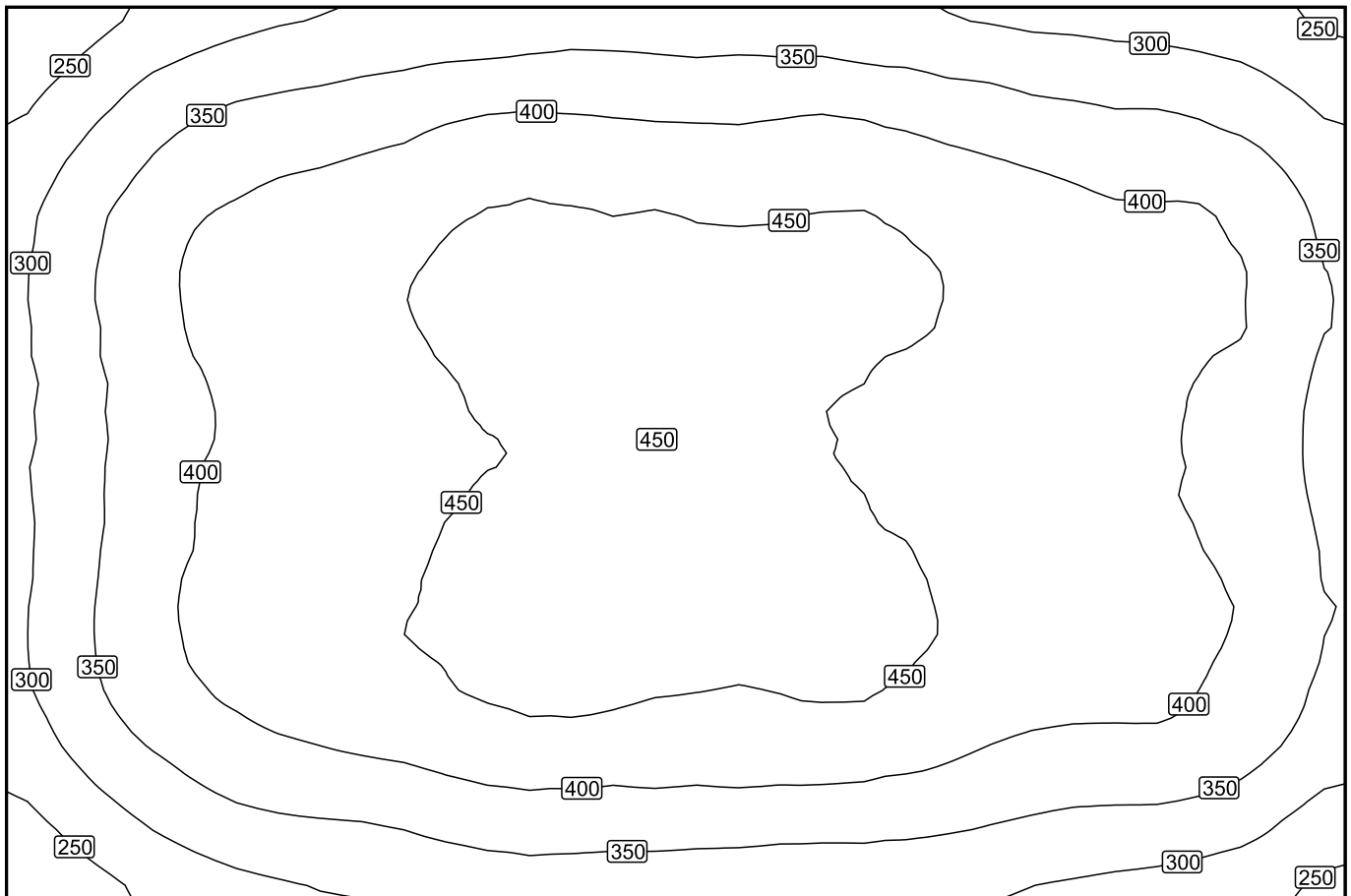
Workplane (Room 1): Perpendicular illuminance (adaptive) (Surface)

Light scene: Light scene 1

Average: 391 lx (Target: ≥ 500 lx), Min: 203 lx, Max: 470 lx, Min/average: 0.52, Min/max: 0.43

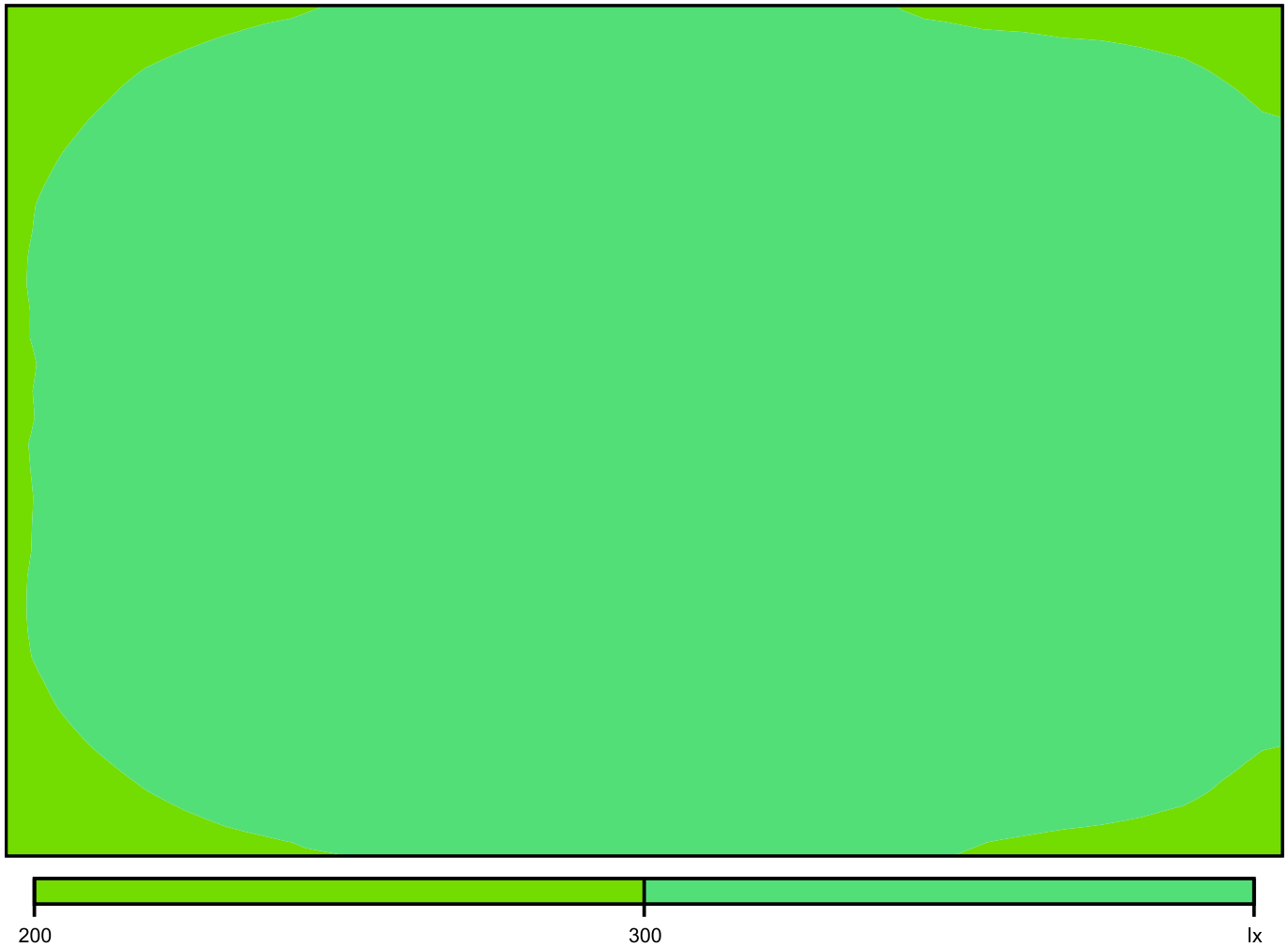
Height: 0.800 m, Wall zone: 0.000 m

Isolines [lx]



Scale: 1 : 50

False colors [lx]



Scale: 1 : 50

Value grid [lx]

+255	+318	+342	+361	+367	+363	+355	+336	+321	+292
+320	+392	+419	+445	+445	+441	+442	+417	+399	+366
+330	+409	+435	+460	+468	+460	+459	+431	+417	+382
+327	+399	+428	+448	+457	+452	+445	+423	+408	+363
+331	+409	+435	+459	+467	+459	+459	+433	+417	+378
+323	+393	+423	+445	+451	+443	+444	+413	+405	+364
+256	+317	+338	+360	+364	+360	+355	+339	+326	+292

Scale: 1 : 50