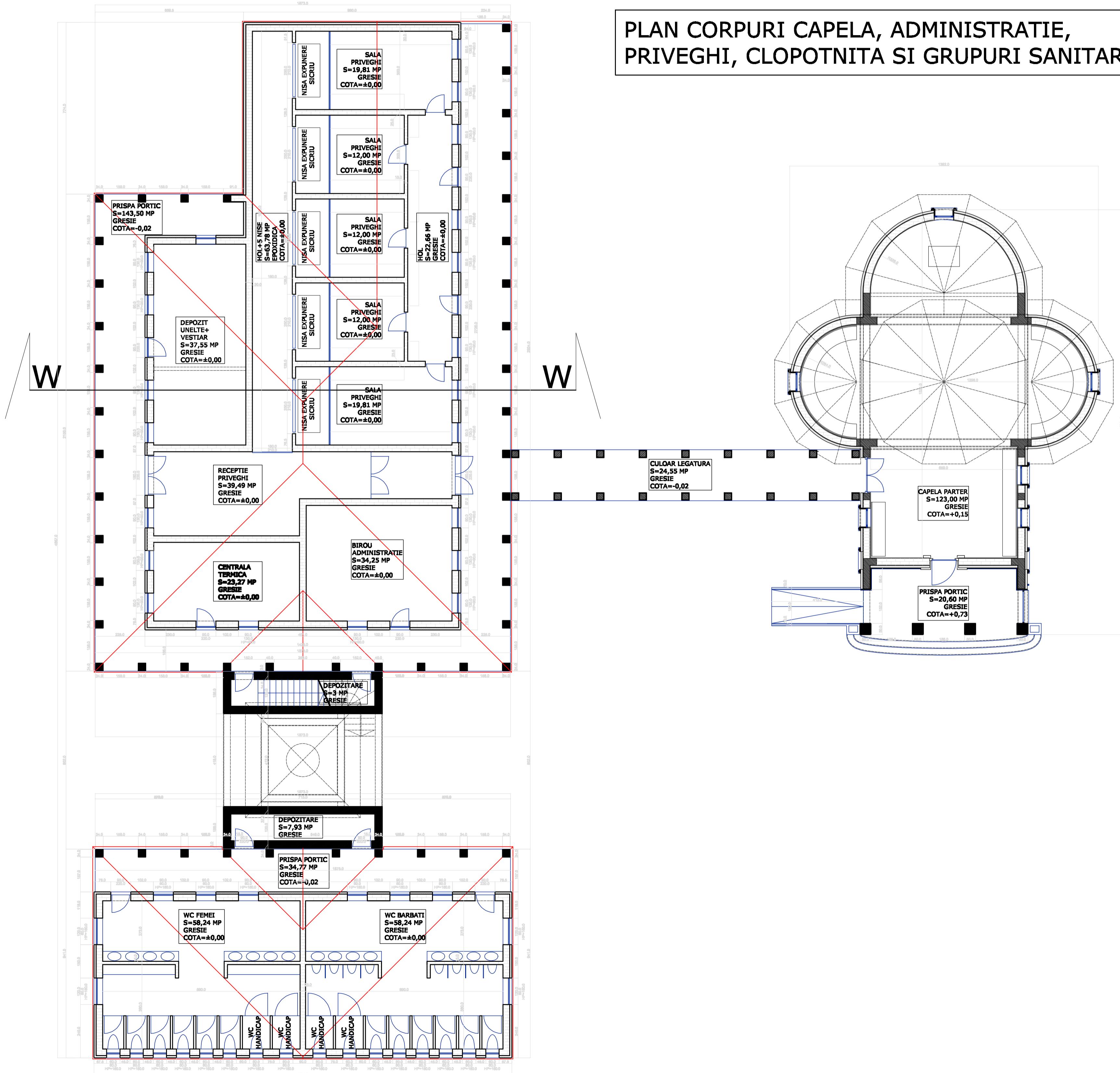


PLAN CORPURI CAPELA, ADMINISTRATIE,
PRIVEGHI, CLOPOTNITA SI GRUPURI SANITARE



SUPRAFETE CONSTRUITE:
CAPELA
 SC=205,25 MP
 (sc capela=169,00 mp+
 sc coridor=36,25mp)
CLADIRE ADMINISTRATIE,
PRIVEGHI, ETC
 SC = 495,75 MP,
CLOPOTNITA,
 SC = 57,40 MP
WC-URI,
 SC = 177,37 MP

TOTAL
 SC = 935,77 MP
 (din care, portice si coridor legatura
 -neinchise/exterioare SC=220,30 MP)