

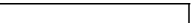
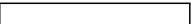



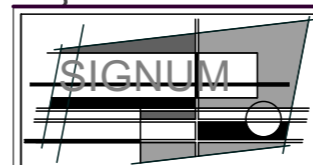
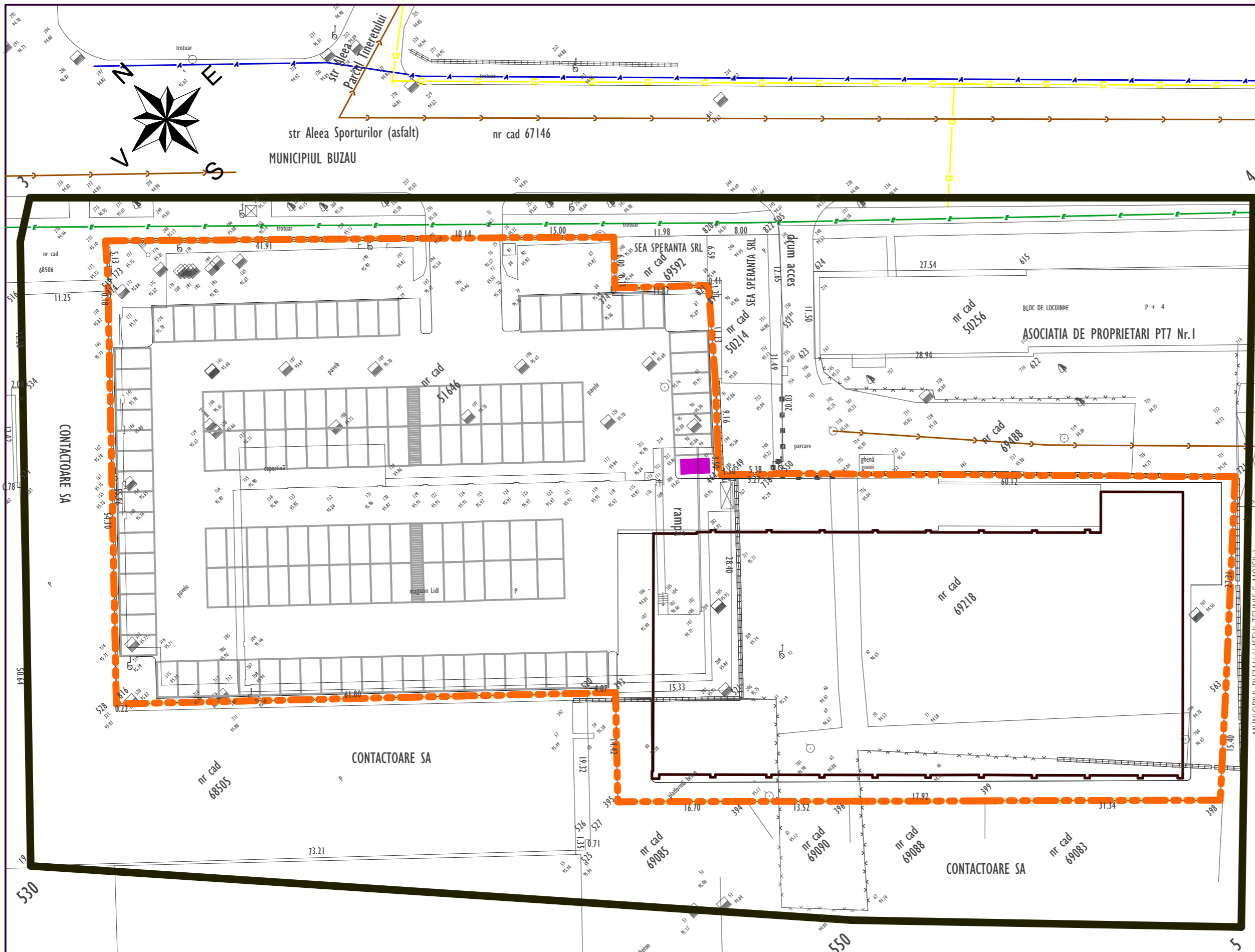


# PUZ / A5/6. ECHIPARE EDILITARA

SCARA 1 : 500  
 \$ ZONA STUDIATA = 14.990 m<sup>2</sup>  
 \$ TEREN LIDL ROMANIA SCS = 7831 m<sup>2</sup>

## LEGENDA

- LIMITA ZONA STUDIATA 
- LIMITA PROPRIETATE SC LIDL ROMANIA SCS 
- LINEIE ELECTRICE SUBTERANE 
- CONDUCTA CANALIZARE 
- CONDUCTA APA POTABILA 
- CONDUCTA GAZE NATURALE 
- PLATFORMA PUBELE GUNOI 



SC SIGNUM SRL BUZAU  
 B - DUL UNIRII / BL. C2 / APT. 14  
 TEL. 0238.414896  
 GSM 0722777315  
 NR. REG. COM. J10/722/06.12.2002  
 COD U.I.F. 15070306

SEF PROIECT	ARH. DANIEL POPA
PROIECTAT	ARH. DANIEL POPA
DESENAT	ARH. DANIEL POPA

OBIECTIV :	PUZ - CONSTRUIRE CENTRU COMERCIAL , GOSPODARIE DE APA SI IMPREJMUIRE , RACORDARE LA LOCALITATI , AMENAJARE PARCARE , AMENAJARE ACCES , AMPLASARE MIJLOACE PUBLICITARE SI ORGANIZARE DE SANTIER		
AMPLASAMENT :	STR. ALEEA SPORTURILOR NR.12A / MUN. BUZAU / JUD. BUZAU		
BENEFICIAR :	LIDL ROMANIA SCS		
DATA	SCARA	PROIECT NR. 210.19 / PUZ	FAZA :
OCT 2019	1 / 500	TITLUL PLANSEI	P.U.Z.
		REGLEMENTARI URBANE ECHIPARE EDILITARA	PL. NR. A 5