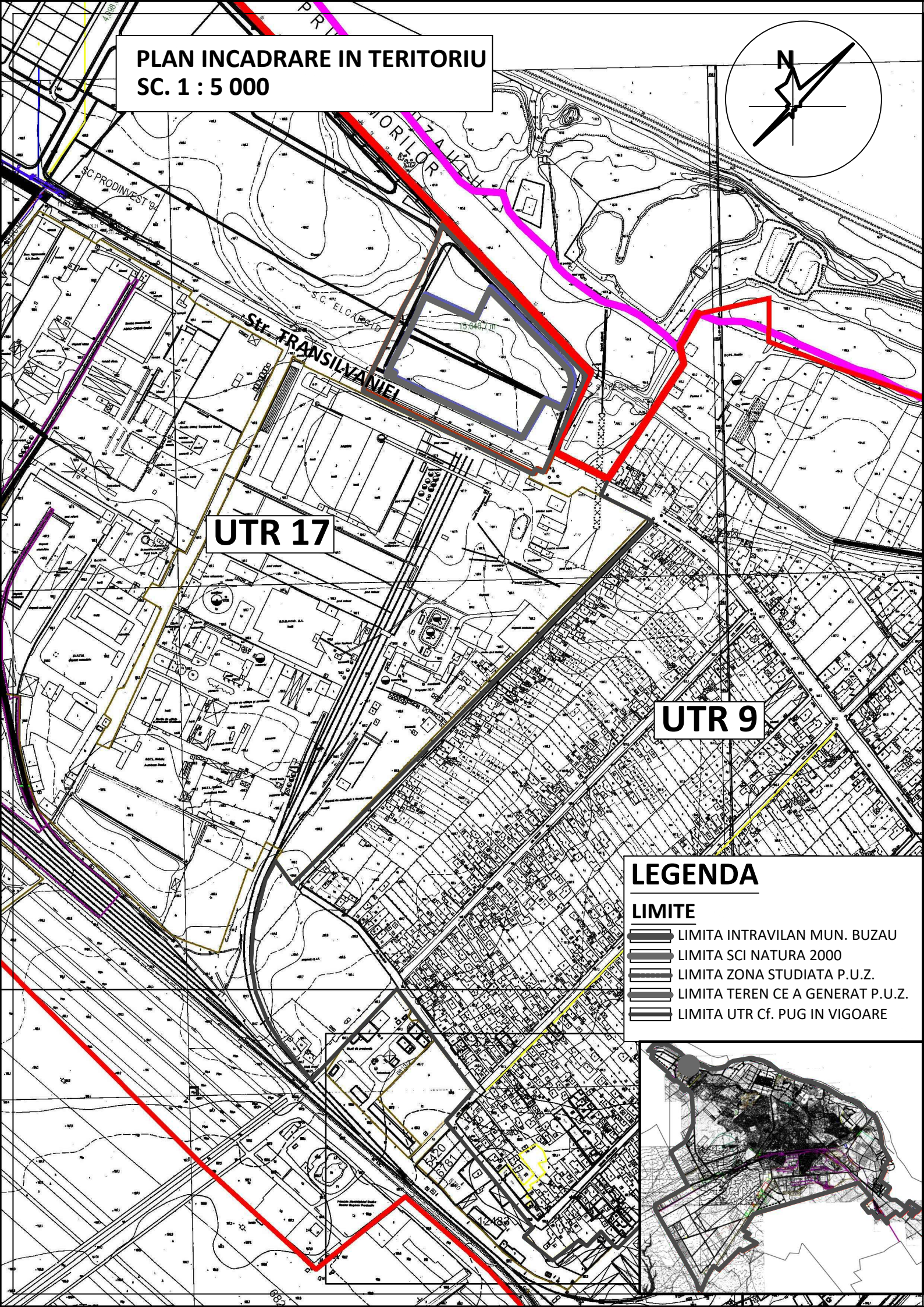
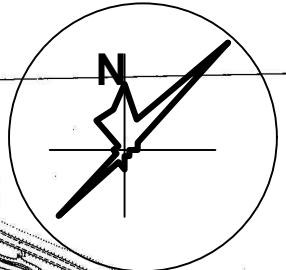


**PLAN INCADRARE IN TERITORIU**  
SC. 1 : 5 000



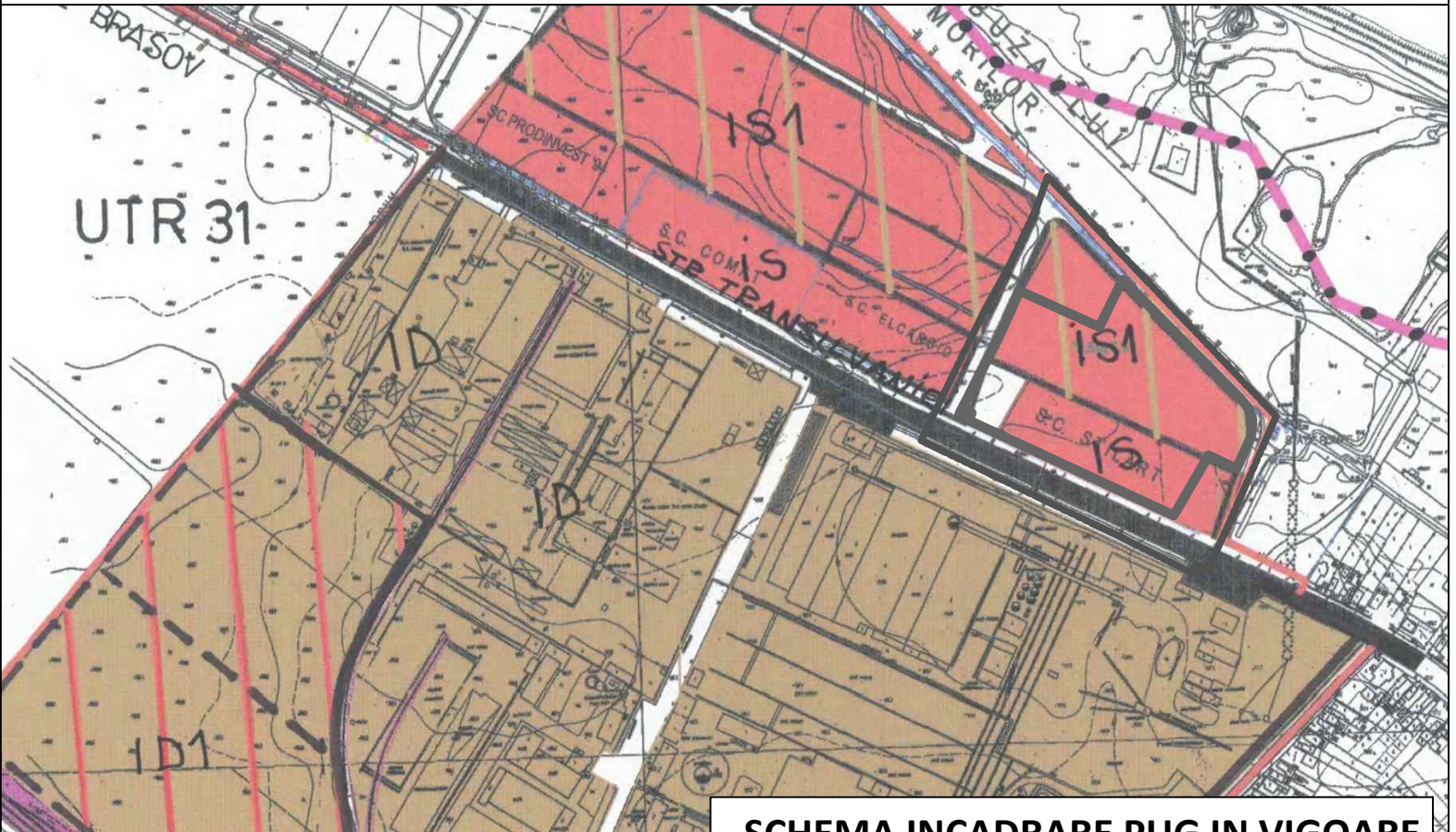
**UTR 9**

**UTR 17**

**LEGENDA**

- LIMITE**
- LIMITA INTRAVILAN MUN. BUZAU
  - LIMITA SCI NATURA 2000
  - LIMITA ZONA STUDIATA P.U.Z.
  - LIMITA TEREN CE A GENERAT P.U.Z.
  - LIMITA UTR Cf. PUG IN VIGOARE

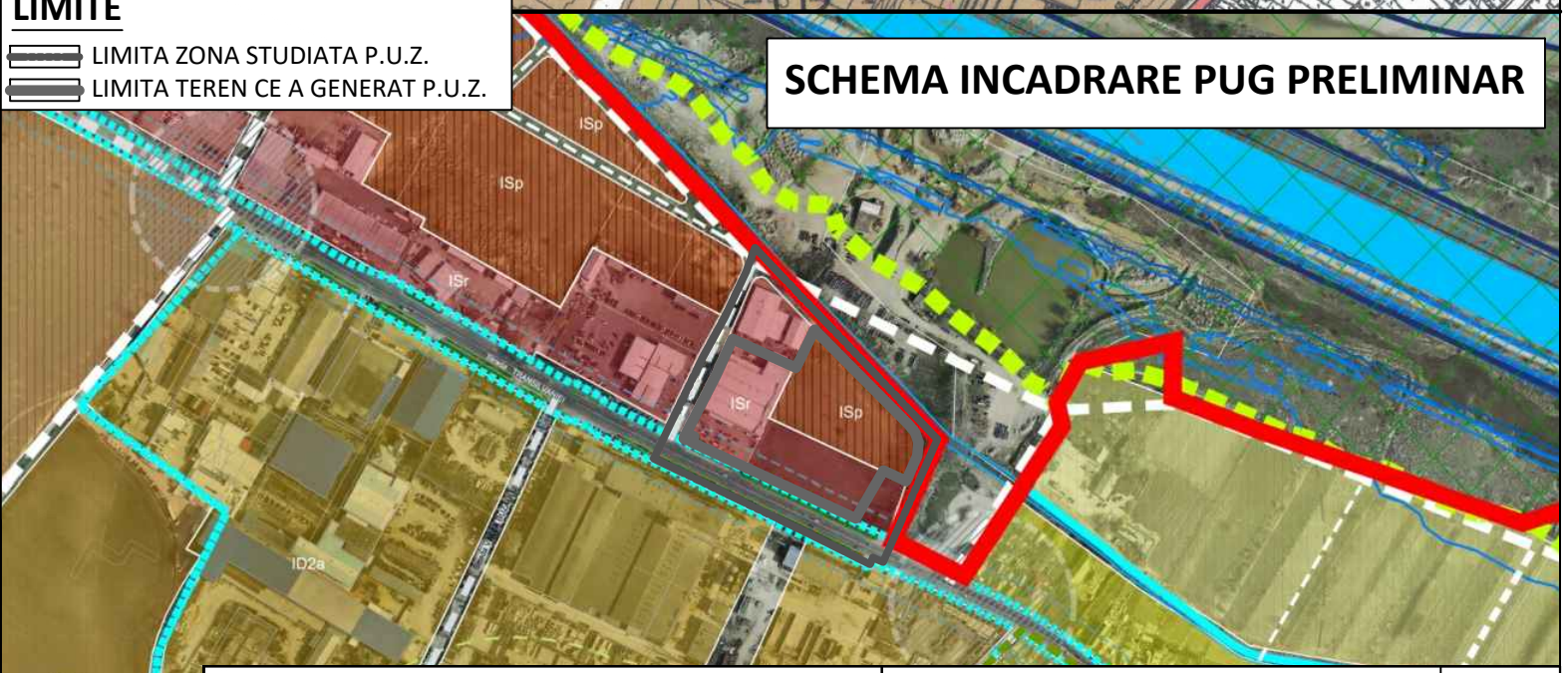
**STUDIU PENTRU EMITEREA AVIZULUI DE OPORTUNITATE**  
**P.U.Z. - EXTINDERE CORP C1, Mun. BUZAU, Nr. Cad. 74795**  
**PLAN INCADRARE IN TERITORIU SI SCHEME INCADRARE IN DOCUMENTATII**



**SCHEMA INCADRARE PUG IN VIGOARE**

- LEGENDA**
- LIMITE**
- LIMITA ZONA STUDIATA P.U.Z.
  - LIMITA TEREN CE A GENERAT P.U.Z.

**SCHEMA INCADRARE PUG PRELIMINAR**



PROIECTANT: S.C. URBANPAS CONSULT S.R.L. CUI: 21225464				BENEFICIAR: GLOBAL CASH & CARRY prin [REDACTED] - administrator		PR. NR. 3U/2025
SPECIFICATIE	NUME	SEMNTURA	SCARA 1: 2 000	TITLU PROIECT: STUDIU DE OPORTUNITATE P.U.Z. EXTINDERE CORP C1, Mun. BUZAU, Nr. Cad. 74795		FAZA: STUDIU OPORTUNITATE P.U.Z.
SEF PROIECT	Urb. S. Andrei			TITLU PLANSA: PLAN INCADRARE SI SCHEME INCADRARE IN DOCUMENTATII		PL. NR. U 1
PROIECTAT	Urb. S. Andrei		DATA 2025			
DESENAT	Urb. S. Andrei					