

PUZ / A1/7. INCADRARE IN TERITORIU

SCARA 1 : 5000

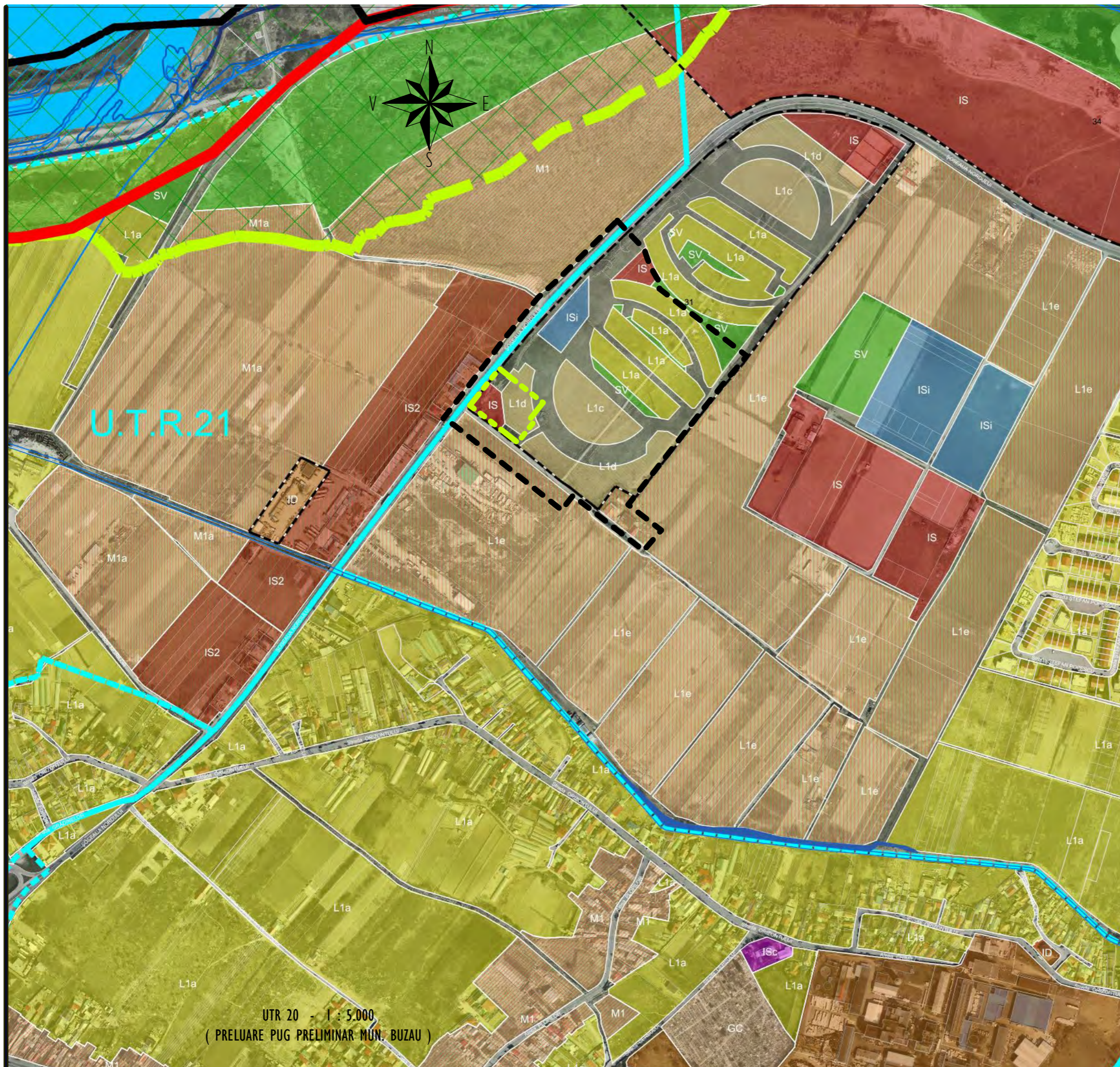
SUPRAFATA TOTALA ZONA STUDIATA = 8,73 ha

LEGENDA

LIMITA ZONA STUDIATA

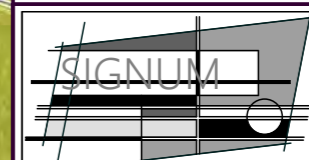


LIMITA PROPRIETATE ABS 2000 SRL



U.T.R.21

UTR 20 - 1 : 5.000
(PRELUARE PUG PRELIMINAR MUN. BUZAU)



SC SIGNUM SRL BUZAU
B - DUL UNIRII / BL. C2 / APT. 14
TEL. 0238.414896
GSM 0722772315
NR. REG. COM. J10/722/06.12.2002
COD U.I.F. 15070306

SEF PROIECT	ARH. DANIEL POPA	
PROIECTAT	ARH. DANIEL POPA	
DESENAT	ARH. DANIEL POPA	
OBIECTIV:	PUZ - CONSTRUIRE SPATIU COMERCIAL	
AMPLASAMENT:	MUN. BUZAU / SOSEAU NORDULUI / NR. 27 / JUD. BUZAU	
BENEFICIAR:	ABS 2000 SRL	
DATA	SCARA	PROIECT NR. S 905.25 / PUZ
MAI 2025	1 / 5000	FAZA: P.U.Z.
		PL. NR. A1