

# PUZ / A5/7 ECHIPARE EDILITARA

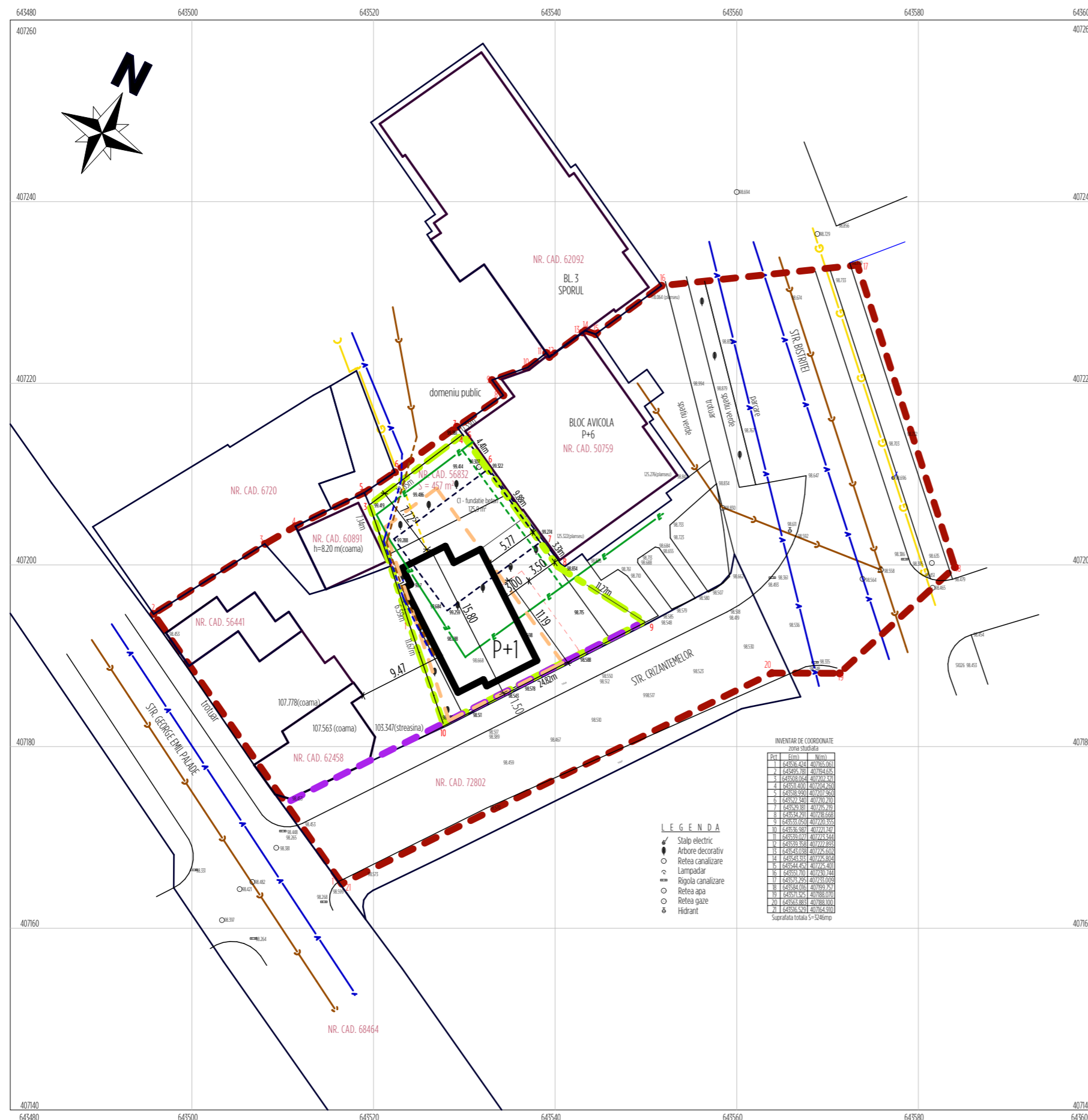
SCARA 1 : 500

SUPRAFATA ZONA STUDIATA = 3246 m<sup>2</sup>

## LEGENDA

LIMITA ZONA STUDIATA	
LIMITA PROPRIETATE	
RETEA ELECTRICA SUBTERANA EXISTENTA	
RETEA ELECTRICA SUBTERANA PROPUSA	
CONDUCTA CANALIZARE EXISTENTA	
CONDUCTA CANALIZARE PROPUSA	
CONDUCTA APA POTABILA EXISTENTA	
CONDUCTA APA POTABILA PROPUSA	
CONDUCTA GAZE NATURALE EXISTENTA	
CONDUCTA GAZE NATURALE PROPUSA	

SUPRAFATA TEREN CARE A GENERAT PUZ = 457 m<sup>2</sup>



INVENTAR DE COORDONATE  
zonei studiate

Pkt	Etm	N(m)
1	643492.421	407247.671
2	643497.761	407247.671
3	643503.101	407247.671
4	643508.441	407247.671
5	643513.781	407247.671
6	643519.121	407247.671
7	643524.461	407247.671
8	643529.801	407247.671
9	643535.141	407247.671
10	643540.481	407247.671
11	643545.821	407247.671
12	643551.161	407247.671
13	643556.501	407247.671
14	643561.841	407247.671
15	643567.181	407247.671
16	643572.521	407247.671
17	643577.861	407247.671
18	643583.201	407247.671
19	643588.541	407247.671
20	643593.881	407247.671
21	643599.221	407247.671
22	643604.561	407247.671

Suprafata totala S=3246mp

LEGENDA

	Stalp electric
	Arbore decorativ
	Retea canalizare
	Lampadar
	Rigola canalizare
	Retea apa
	Retea gaze
	Hidrant

RETRAGERE CONSTRUCTII FATA DE ALINIAMENT	
EDIFICABIL ( CONTUR CONSTRUIBIL )	



SC SIGNUM SRL BUZAU  
B - DUL UNIRII / BL. C2 / APT. 14  
TEL. 0238.414896  
CSIM 072277216  
NR. REG. COM. J10722/06.12.2002  
COD U.I.F. 15070306

SEF PROIECT	ARH. DANIEL POPA
PROIECTAT	ARH. DANIEL POPA
DESENAT	ARH. DANIEL POPA

OBIECTIV:	PUZ - CONSTRUCTIE SI DOTARE CABINET MEDICAL PENTRU SERVICII SPECIALIZATE - REGIM P+1
AMPLASAMENT:	MUN. BUZAU / STR. CRIZANTEMELOR NR.2 / JUD. BUZAU
BENEFICIAR:	DIABMON MAR LIFE SRL
DATA	NOV 2024
SCARA	1 / 500
TITLUL PLANULUI	PROIECT NR. S 111.24 / PUZ
FAZA:	P.U.Z.
PL. NR.	A 5